

# IPD Protect

## IGBT 20A/1350V RC-H5 technology with driver IC

### Features

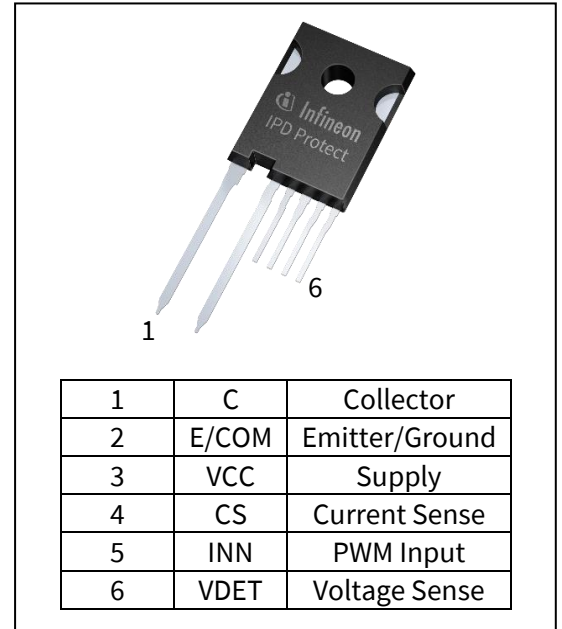
- Reverse conducting IGBT with monolithic body diode designed for soft commutation
- Integrated Driver with
  - Over-voltage and over-current protection
  - Active clamp control circuit
  - Programmable over-voltage threshold
  - Programmable cycle-by-cycle over-current threshold
  - Integrated gate drive with 2 level turn-on current
  - Temperature warning
  - Over-temperature protection
  - VCC UVLO
  - Integrated ESD protection and latch immunity on all pins
- Qualified for industrial applications according to the relevant tests of JEDEC47/20/22
- PG-TO247-6 package
- <http://www.infineon.com/IPD-Protect>

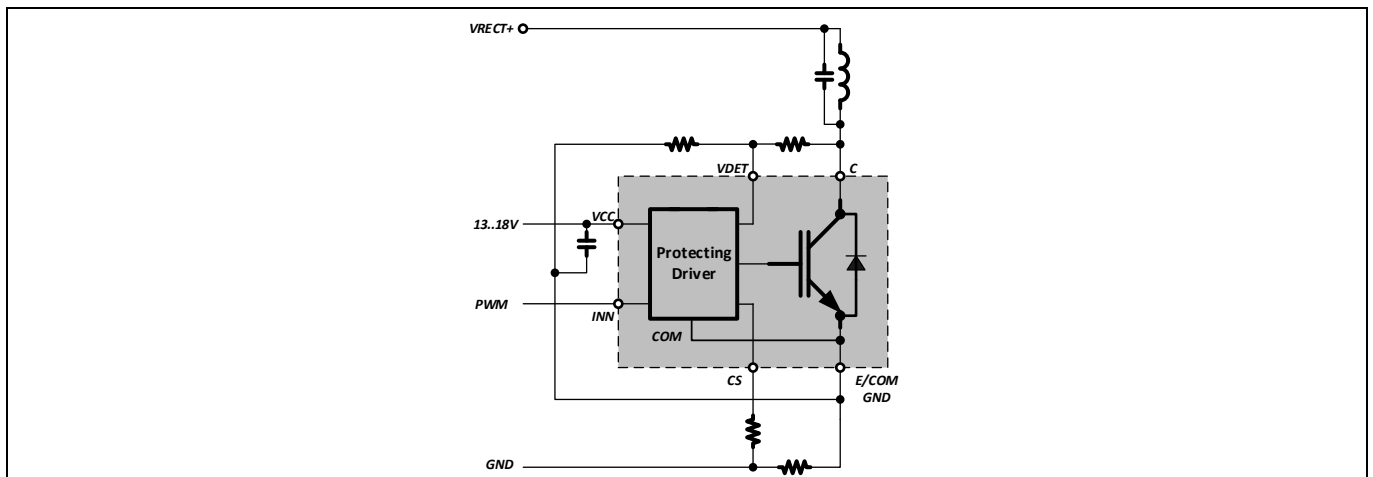
### Applications

- Induction cooking

### Description

The IPD (Integrated Power Device) Protect includes an IGBT with Gate Driver IC in a TO247 6-pin package for induction cooking applications. Its innovative concepts provide protection against over-voltage, over-current, and over-temperature. Additional features include a unique active clamp control, fault condition notification, and a special two levels turn-on Gate driving that reduces significantly the typical high startup peak current. These integrated protection functions provide a simple and robust solution with increased overall system reliability.





**Figure 1 Typical Application**

**Table of Contents**

**Features 1**

**Applications..... 1**

**Description1**

**Table of Contents ..... 2**

**1 Block Diagram ..... 3**

**2 State Diagram ..... 4**

**3 Electrical Parameters Driver ..... 5**

3.1 Absolute Maximum Ratings .....5

3.2 Recommended Operating Conditions.....5

**For proper operation the device should be used within the recommended conditions. (T<sub>A</sub>=25°C)..... 5**

3.3 Electrical Characteristics .....6

**4 Electrical Parameters IGBT ..... 8**

4.1 Absolute Maximum Ratings .....8

4.2 Electrical Characteristics .....9

**5 Pin Configuration, Description and Functionality .....11**

5.1 Pin Configuration and Description ..... 11

5.2 IGBT connect pins (C, E/COM) ..... 11

5.3 VCC and COM ..... 11

5.4 Current limitation input (CS) ..... 12

5.5 PWM input / Diagnostic output (INN) ..... 12

**5.6 Over-voltage detection input (VDET) ..... 13**

**6 Timing Diagrams.....16**

**7 Electrical Characteristics Diagrams.....17**

**8 Test Conditions .....24**

**9 Package Drawing .....25**

9.1 Package Dimensions ..... 26

**Revision History .....27**