

2 MODULE RACKS

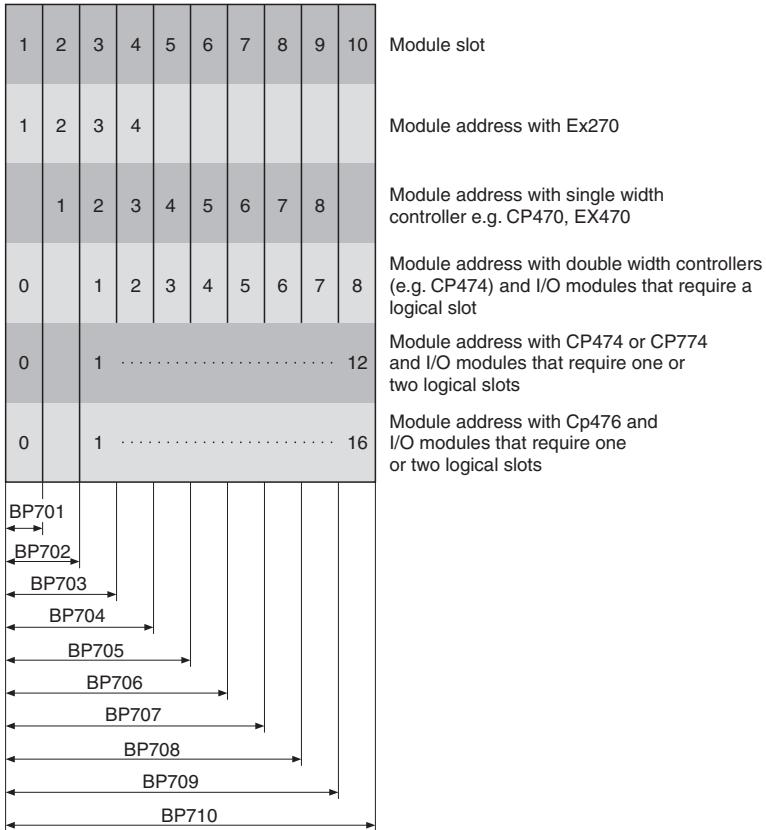
2.1 GENERAL INFORMATION

The module racks for the B&R SYSTEM 2003 are aluminum frames. They are installed on mounting rail.

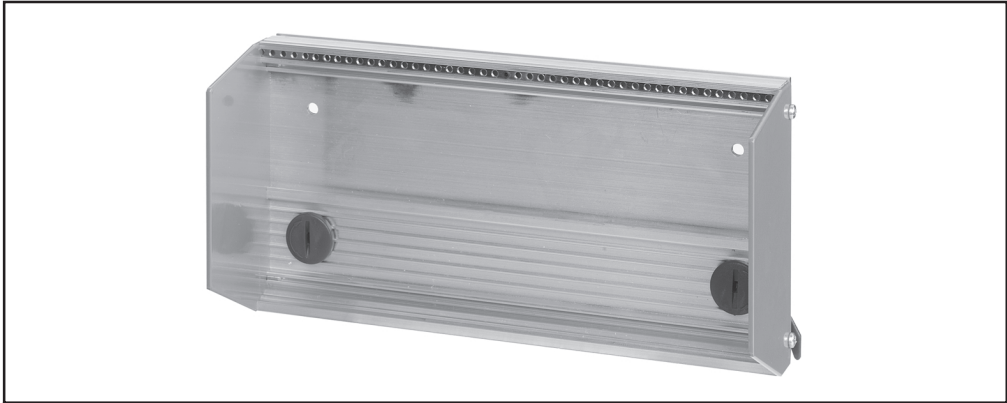
Controller and I/O modules are hung in the module rack and screwed to a threaded strip which is inserted in the aluminum frame. The electrical connection between the modules is achieved by pushing the modules together (integrated plug and socket connection in the modules).

We recommend always using the smallest possible module rack. If module slots do remain free, fitting a bus cover on the first free slot is recommended. In this way, the last module can be protected from damage.

The module address is determined by the controller and the module slot. The CP interface is accessed using module address 0.



2.2 TECHNICAL DATA



2.2.1 Module Racks with Two Side Sections (7BP7xx.0)

Module ID	BP702	BP703	BP704
Model Number	7BP702.0	7BP703.0	7BP704.0
Short Description	2003 Module Racks for 2 modules	2003 Module Racks for 3 modules	2003 module racks for 4 modules
Number of Module Slots	2	3	4
C-UL-US Listed	Yes		
Material	Aluminum		
Fastening the Modules	Hang modules in the rack and screw into place (threaded strips in frame)		
Mounting the Module Rack	Integrated mounting mechanics (standard mounting rail)		
Dimensions [mm]			
Height	115	115	115
Width ¹⁾	161.5	238,314.5	
Depth	23	23	23

¹⁾ Includes 8.5 mm for two side sections and mounting screws.

Module ID	BP705	BP706	BP707
Model Number	7BP705.0	7BP706.0	7BP707.0
Short Description	2003 Module Racks for 5 modules	2003 Module Racks for 6 modules	2003 module racks for 7 modules
Number of Module Slots	5	6	7
C-UL-US Listed	Yes		
Material	Aluminum		
Fastening the Modules	Hang modules in the rack and screw into place (threaded strips in frame)		
Mounting the Module Rack	Integrated mounting mechanics (standard mounting rail)		
Dimensions [mm]			
Height	115	115	115
Width ¹⁾	391,467.5	544	
Depth	23	23	23

¹⁾ Includes 8.5 mm for two side sections and mounting screws.

Module ID	BP708	BP709	BP710
Model Number	7BP708.0	7BP709.0	7BP710.0
Short Description	2003 Module Racks for 8 modules	2003 Module Racks for 9 modules	2003 module racks for 10 modules
Number of Module Slots	8	9	10
C-UL-US Listed	Yes		
Material	Aluminum		
Fastening the Modules	Hang modules in the rack and screw into place (threaded strips in frame)		
Mounting the Module Rack	Integrated mounting mechanics (standard mounting rail)		
Dimensions [mm]			
Height	115	115	115
Width ¹⁾	620.5	697,773.5	
Depth	23	23	23

¹⁾ Includes 8.5 mm for two side sections and mounting screws.

2.2.2 Module Racks with One Side Section (7BP70x.1)

These module racks are e.g. used together with the EX270 CAN bus controller.

Module ID	BP701	BP702
Model Number	7BP701.1	7BP702.1
Short Description	2003 Module Racks for 1 module, incline. right side section	2003 module racks for 2 modules, incl. right side section
Number of Module Slots	1	2
C-UL-US Listed	Yes	
Material	Aluminum	
Fastening the Modules	Hang modules in the rack and screw into place (threaded strips in frame)	
Mounting the Module Rack	Integrated mounting mechanics (standard mounting rail)	
Dimensions [mm]		
Height	115	115
Width ¹⁾	81	157,5
Depth	23	23

¹⁾ Includes 4.5 mm for one side section and mounting screws.

2.3 MOUNTING

Mounting the module racks is described in Chapter 2, "Project Planning and Installation".