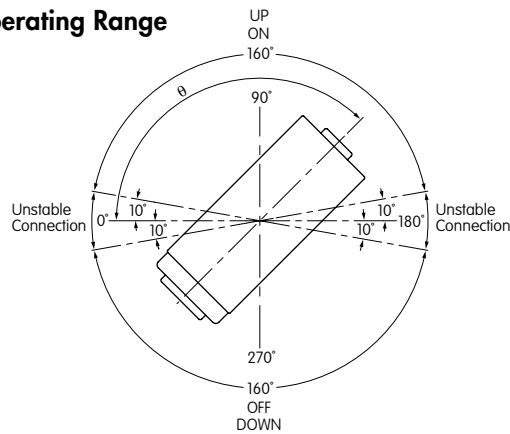
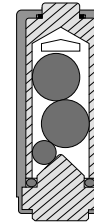


DSA SWITCH SPECIFICATIONS (CONTINUED)

Operating Range

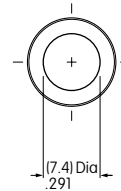
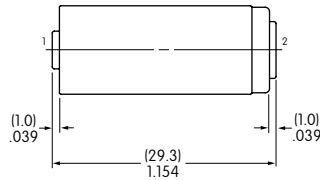
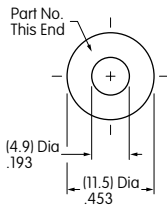


Cross Section



Allow 500ms settling time between states.

TYPICAL SWITCH DIMENSIONS



DSA01

Terminal numbers are not on the switch.

OPTIONAL ADAPTOR

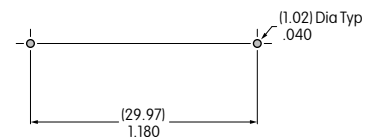
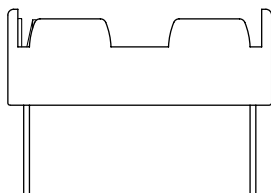
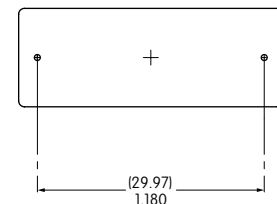
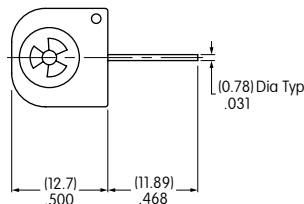
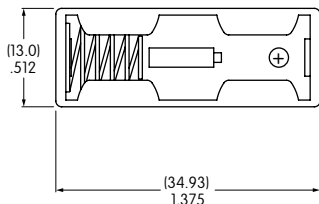


AT094
PCB Adaptor for DSA01

Materials:
Holder: Polypropylene
Spring: Spring Steel with Nickel Plating
PC Pins: Brass with Nickel Plating

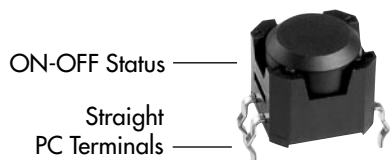


Assembled DSA Switch & Adaptor

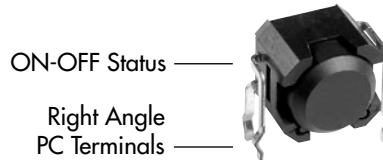


PCB Footprint

DSB SWITCH PART NUMBERS & DESCRIPTION



DSBA1P



DSBA1H

DSB SWITCH SPECIFICATIONS

Absolute Maximum Ratings Temperature at 25°C

		Symbol	Rating	Unit
Input	Forward Current	I_F	50	mA
	Reverse Voltage	V_R	5	V
	Power Dissipation	P_D	75	mW
Output	Collector-Emitter Voltage	V_{CEO}	30	V
	Emitter-Collector Voltage	V_{ECO}	3	V
	Collector Current	I_C	20	mA
	Collector Power Dissipation	P_C	50	mW
	Total Power Dissipation	P_{tot}	100	mW

Mechanical Specifications

Mechanical Life:	1,000,000 operations minimum
Electrical Life:	1,000,000 operations minimum using applicable circuit

Materials & Finishes

Housing:	Glass fiber reinforced polyamide (UL94V-0 flammability rating)
Base:	Glass fiber reinforced polyamide (UL94V-0 flammability rating)
Terminals:	Phosphor bronze with tin plating

Environmental Specifications

Operating Temperature Range:	-25°C ~ +80°C (-13°F ~ +176°F)
Storage Temperature Range:	-30°C ~ +85°C (-22°F ~ +185°F)
Humidity:	85% humidity for 500 hours @ +85°C (+185°F)
Vibration:	10Hz with peak-to-peak amplitude of 10mm traversing the frequency range & returning in 1 minute; 3 right angled directions for 500,000 cycles
Shock:	100G (981m/s ²) acceleration (tested in 6 right angled directions, with 5 shocks in each direction)
Notes:	<ol style="list-style-type: none"> 1. Prevent exposure to magnetic fields. 2. Do not install switch near vibration source.