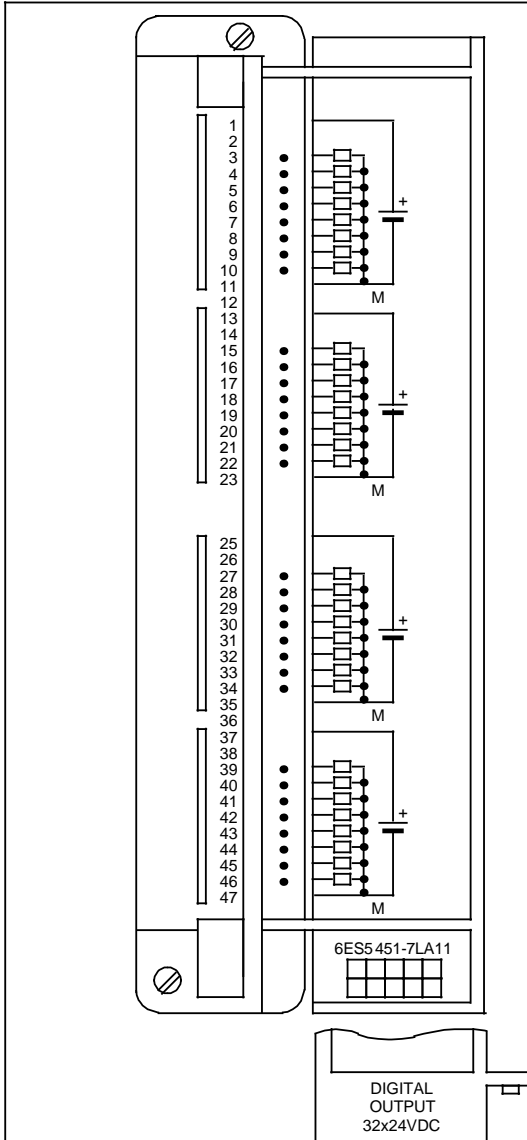
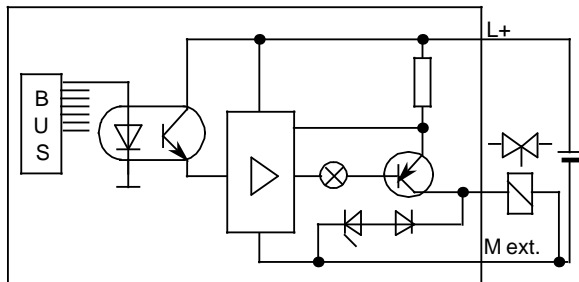


Digital Output Module 32 x 24 V DC; 0.5 A, Floating

(6ES5 451-7LA11)



Terminal Assignment



Simplified Schematic

Technical Specifications

Number of outputs		32
Galvanically isolated		yes (optocoupler)
- in groups of		8
Load voltage L+		
- rated value		24 V DC
- permissible range		20 to 30 V
- surge voltage at t 0.5 sec.		35 V
Output voltage		
- for "1" signal	min.	L+ -2.5 V
Output current		
for "1" signal		
- rated value		0.5 A
- lamp load	max.	5 W
Leakage current		
for "0" signal	max.	1 mA
Parallel connection of outputs		not possible
Permissible total current of outputs		100% at 25°C and 50% at 55°C (related to the sum of the currents)
Short circuit protection		electronic
Limitation of the voltage induced on circuit interruption		- 15 V
Switching frequency		
- inductive load	max.	0.5 Hz
- resistive load	max.	100 Hz
Cable length		
- shielded		1000 m (3281 ft.)
- unshielded		600 m (1969 ft.)
Isolation rating		according to VDE 0160
Rated isolation voltage (between groups)		30 V DC
- isolation group		C
- tested at		500 V AC
Rated isolation voltage (L+ to $\perp$ )		30 V DC
- isolation group		C
- tested at		500 V AC
Current consumption		
- from 5 V (internal)		100 mA
- from L+ (without load)		17 mA / per group
Power losses of the module	typ.	20 W
Weight	approx.	0.7 kg (1.54 lb.)